



OWNER'S MANUAL

INBOARDS

2008



HEWES MARINE COMPANY, INC.
2600 NORTH HIGHWAY
COLVILLE, WA 99114

509-684-5235
800-326-6594
509-684-4663 FAX

E-MAIL: parts@hewescraft.com
sales@hewescraft.com
WEB SITE: www.hewescraft.com



Ralph and Dave Hewes in a 1952 Vintage 10 foot Hewes Flying Service boat.

Welcome to Hewecraft.

Congratulations on the purchase of your new boat, and thank you for trusting Hewecraft with your boating and fishing requirements. The 2008 model year boats represent a landmark for Hewes Marine Company – we are celebrating our 60th anniversary of engineering and building high quality, functional fishing boats that last a lifetime. Welcome to our family of Hewecraft owners. Enjoy the ride!

HEWESCRAFT™ OWNER'S MANUAL

Table of Contents

IDENTIFICATION NUMBERS	4
SAFETY	5
PERSONAL FLOTATION DEVICES	5
SPORT JET BLOWER	5
FIRE	5
CAPSIZING	6
REVERSE	6
CONTROLS AND INDICATORS	7
Instruments	7
System Information gauge	7
Fuel Gauge	7
Switches	7
Blower Switch	7
Bilge PUMP Switch	7
Ignition Switch	8
Horn Switch	8
Accessory Switch	8
Wiper Switch	8
Navigation Lights Switch	8
Navigation lights	8
FUELING	9
TRIM TAB ANGLE	10
STANDARD TRIM TAB DRAWING	11
CORROSION PROTECTION	12
VINYL UPHOLSTERY CLEANING	13
TOPS	14
ACCESSORIES	14
12 Volt power point	14
Bilge Pump	14
Pedestal Seats	14
FusE Block	15
Decals/Striping	15
LIVWELL	16
SPORT JET BOW LIVWELL	17
HEWES Trailer	17
Launching Check List:	19
Retrieving the boat:	19
HEWESCRAFT™ STEM TO STERN LIMITED WARRANTY	20
INSPECTION AND MAINTENANCE SCHEDULE	22
MAINTENANCE LOG	22
WIRING SCHEMATICS	23

IDENTIFICATION NUMBERS

Record the hull identification number (HIN) and model of your boat, engine and trolling motor. Keep them in a safe place off the boat. The HIN is located on the upper, starboard corner of the transom. The HIN must be clearly visible and may not be removed, altered or tampered with in any way, by federal law.

Identification numbers are important!

In case of theft, damage, etc. report these numbers to the local authorities, your insurance agent and your dealer.

	HEW	12345	G	6	07
Manufacturer's I.D.					
Serial Number					
Month Manufactured					
Year Manufactured					
Model Year					

MONTH CODE

A - January	E - May	I September
B - February	F - June	J - October
C - March	G - July	K - November
D - April	H - August	L - December

SAFETY

Hewes Marine Company recommends reading some of the many pamphlets provided by State and Federal agencies on boating and water safety.

However, this section will cover some general safety information that we feel is essential.

PERSONAL FLOTATION DEVICES

Federal law requires at least one type I, II or III Personal Flotation Device (PFD) for each person on board or being towed on water skis, and in addition, one throwable type IV PFD. PFDs are intended to help you save your own life, but they will do their job only if they are worn. It is especially important that children or non-swimmers wear a PFD at all times.

SPORT JET BLOWER

The engine box ventilation blower must be operated a minimum of four minutes prior to each engine start. In addition, the blower should be operated continuously when at idle or slow speeds.

WARNING!

Failure to operate the blower can cause an explosion.

A yearly inspection of the bellows should be performed to check for cracks or splits. Mercury warranties the bellows for a period of 1 year. If cracks or splits occur this could cause steering failure. Replace bellows immediately. Open motor cover and visually inspect for leaking fuel.

FIRE

Most fires are the result of careless fueling practices. Take care during refueling or maintenance to avoid spills of flammable liquids. In the event of a fire, use the fire extinguisher at the base of the flames with a sweeping motion. If the fire cannot be extinguished, leave the boat and swim at least 25 yards **upwind** from the boat.

WARNING!

Gasoline will float on top of the water and can burn. Be aware of the fuel spreading on the water when determining how far to swim from the boat.

CAPSIZING

A boat may capsize or swamp when least expected. Keep in mind the following guidelines:

- ❖ Stop the engine by turning off the ignition or pulling the stop switch lanyard.
- ❖ If others were on board, locate them and guide them to the safety of the hull.
- ❖ If not wearing PFDs, locate, retrieve and put them on.
- ❖ **STAY WITH THE BOAT, IT WILL FLOAT!** It will also make you more visible to rescuers.

WARNING!
Be extra careful to check that the motor bolts were sealed properly to prevent leakage.

REVERSE

Unlike propeller-driven boats, turning the steering wheel when reversing turns the bow of the boat in the same direction.

CONTROLS AND INDICATORS

The single lever control operates as both a gear shift and a throttle. Shifting is accomplished by moving the lever into the first part of travel. To move forward, push the lever ahead; to move in reverse, pull the lever back. Boat will not steer if power is cut or in neutral! If performance is still poor, check intake grate and remove any debris. Refer to the remote control operation manual for more details.

INSTRUMENTS

Our instruments are illuminated for night operation. Their type, number, and location vary by model. Some may not appear on your boat.

SYSTEM INFORMATION GAUGE

The compact information monitor come standard with the SportJet model and displays various information screens about your Mercury Optimax engine. The gauge functions include the following: Tachometer (engine RPMs), Oil temperature, Oil Pressure, Engine Temperature, Battery Voltage, Fuel Flow, Fuel Used and Seawater temperature.

With optional transducers additional functions can be enabled including Range, Water Depth and Vessel Speed. Consult the user manual for this system monitor gauge and the engine manual for set up, calibration and usage of this gauge.

FUEL GAUGE

This gauge registers the approximate fuel level in the fuel tank. Due to the movement of the boat on the water and the shallow design of some fuel tanks, the fuel gauge will frequently not read accurately. The ignition switch must be on to activate the gauge.

Note: To connect to your harness, attach the purple wire to the hot side of the ignition.

SWITCHES

Each electrical circuit on your boat is equipped with a control switch. Most switches will have a circuit breaker adjacent to the switch to protect against damage from overloads. Pushing the breaker button will reset the breaker.

BLOWER SWITCH

Activates the engine box ventilation blower to remove explosive fumes from the box and bilge area. The blower must be operated a minimum of four minutes prior to each engine start.

BILGE PUMP SWITCH

Activates the bilge pump to remove excess water from the bilge. Do not operate dry for extended periods.

IGNITION SWITCH

Starts and stops the engine. Consult the engine operator's manual for detailed information.

HORN SWITCH

Your boat may be equipped with a hidden horn. Push and hold switch to sound the horn.

ACCESSORY SWITCH

Some models have an unused switch that can be used for an add-on accessory. Be sure to install a fuse in the electrical circuit of the added item. The ground should be connected to the ground system of the boat that leads directly to the battery.

WIPER SWITCH

An on/off switch operates the windshield wiper on models so equipped.

NAVIGATION LIGHTS SWITCH

Controls the running and anchor lights for night operation. LIGHTS NAV position will turn on the red and green bow lights and the white stern light. ANCHOR position turns on only the white stern light for night anchoring.

NAVIGATION LIGHTS

Hewescraft boats are equipped with a stow-away anchor light for operation at night. When not in use, the mast light should be secured in the anchor light holders.

To mount the anchor light:

1. Open the base lid cover.
2. Align the screw head on the light pole with the slot in the light base and push the pole in.
3. Lock pole in place by turning the cover to the lock position.

FUELING

WARNING!

Gasoline is extremely flammable and highly explosive under certain conditions.

Always stop the engine when refueling and never smoke or allow open flames or sparks within 50 feet of the fueling area.

Take care not to spill gasoline. If gasoline is spilled accidentally, wipe up all traces of it with dry rags and immediately dispose of them properly.

When refueling:

- ❖ Extinguish cigarettes, pipes, and all other flame producing items.
- ❖ Make sure all power is **OFF**, and do not operate any electrical switches.
- ❖ Remove fuel fill cap, insert hose nozzle and make sure nozzle is in contact with, or grounded against fill opening. This will reduce the risk of static spark.
- ❖ Add fuel. **Do not fill to capacity to allow for fuel expansion. Do not “top-off”.**
- ❖ Tighten the fill cap completely after refueling.
- ❖ If your boat is equipped with a polyethylene fuel tank, the capacity at first fill up may be 3 to 6 gallons less than rated. These tanks expand up to 2% 30 to 45 days after fueling.

TRIM TAB ANGLE

The performance of your boat depends on the load weight and distribution. Distribute the weight evenly, from bow to stern, and also from port to starboard.

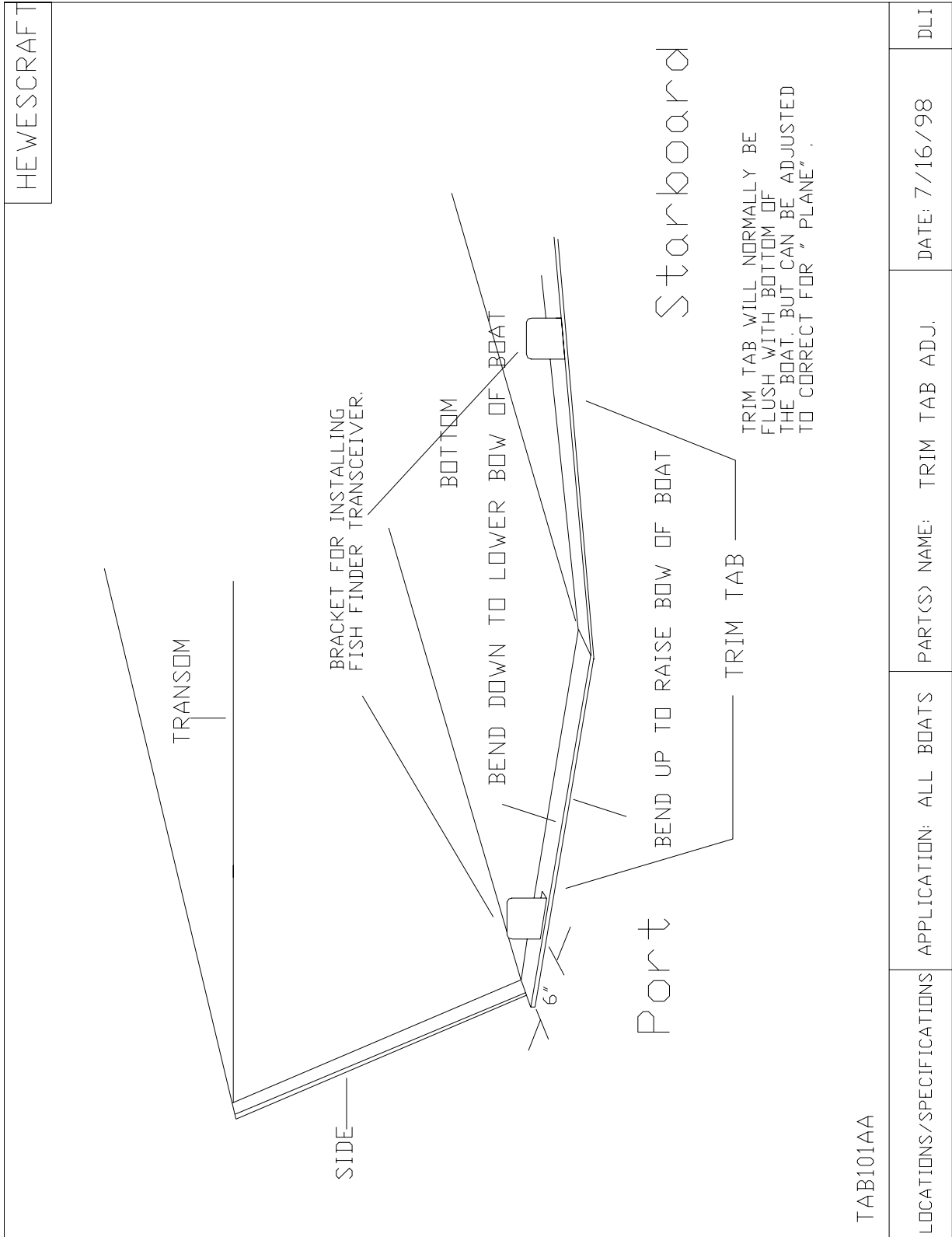
All Hewescraft boats are equipped with trim tabs (see drawing # TAB101AA) to help trim your boat for the optimum planing attitude.

If your boat is porpoising (the bow seems to bounce), then the trim tab should be moved down. If the boat is plowing or steering is difficult, move the trim tab up. If your boat lists to the port side adjust the trim tab down on the port side and up on the starboard side. If your boat lists to the starboard side adjust the trim tab down on the starboard side and up on the port side. Adjust from the transducer bracket to the center keel.

CAUTION

Before making adjustments to the trim tab, straighten tab to be flush with the bottom and then run the boat. Make the appropriate adjustments in increments of 1/8" or less. A small amount of adjustment yields large results.

STANDARD TRIM TAB DRAWING (TAB101AA)



CORROSION PROTECTION

Although your boat is constructed with high quality 5052 or 5086 marine aluminum alloy, corrosion can occur unless these precautions are followed:

- ❖ Install a transom mounted sacrificial zinc anode or a Mercathode system (#88334TZ), if you operate in salt or brackish waters. A zinc anode will corrode before the metal it protects. The Mercathode system provides protection by impressing a reverse blocking current that stops the destructive flow of galvanic currents. However, you may experience some surface stains.
- ❖ Regularly rinse your boat with fresh water.
- ❖ Never apply copper, lead, antimony, arsenic or mercury based anti-fouling paint to your boat.
- ❖ Regularly inspect the structure of your boat for signs of corrosion. If you see damage, inspect all wiring for breaks or loose connections.

Under normal conditions aluminum surfaces retain their attractiveness with little maintenance. Your boat should be cleaned regularly with mild detergent and flushed liberally with fresh water. It is very important to rinse the outside of your boat with fresh water after trailering it on winter roads that may have road salt. Periodic application of waxes will greatly improve the appearance of the boat. Wiping the sides of your boat with a dry towel will help reduce water stains. Consult with your dealer about deoxidizing acids if you wish to clean heavily stained surfaces.

WARNING: WINTER BOAT TOWING AND CORROSION

Unprotected Aluminum boat hulls can be damaged, sometimes severely, by road de-icers.

When towing a boat in the winter, the towing vehicle can throw de-icers from the road onto the hull of the towed boat. Flushing the hull afterwards with fresh water can be too late to avoid the corrosive action of the de-icer on the hull, resulting in discoloration and even pitting. Covering the hull in some way is the best approach, and there are a number of protective coatings available that may reduce the risk of damage. An internet search for “Aluminum Protective Coatings” is one way of locating suppliers of these coatings. Hewescraft suggests contacting your dealer with any questions concerning winter towing.

Sharkhide™ is a sealant that helps to protect the finish of your aluminum boat. This aluminum sealer should help reduce the water staining of your boat for three or more years.

For more information about **Sharkhide™**, check out their web site at www.sharkhide.com.

VINYL UPHOLSTERY CLEANING

Cleaning Items Needed:

1. Ivory® Dishwashing Liquid and water.
2. Clean, white towels
3. Medium-soft brush
4. Fantastic® Spray Cleaner
5. Denatured Alcohol
6. 3M® Citrus Cleaner (to order, call 404-447-7132)
7. Ammonia and hydrogen peroxide
8. Clorox® Bleach
9. Baking Soda

1. BASIC STAINS - Grease/Pencil/Dirt:

Ivory® Soap and water or Fantastic® Spray Cleaner applied with a medium-soft brush

2. TOUGH STAINS - Adhesive/Teak Oil/Rust: 3M® Citrus Cleaner; rinse with soap and water

3. INK:

Denatured Alcohol

4. MILDEW STAINS:

To kill bacteria creating the mildew, vigorously brush the stained area with a 4-to-1 mixture of water and ammonia; rinse with water.

5. TOUGH MILDEW STAINS:

Apply a mixture of one (1) teaspoon ammonia, one-fourth (1/4) cup of hydrogen peroxide, and three-fourths (3/4) cup of distilled water, rinse with water.

6. LEAF STAINS:

Make a paste, using Clorox® Bleach and Baking Soda, Rinse with water immediately

Always Clean Stains Immediately

TOPS

The top on your boat is constructed of high quality vinyl, and to insure its longevity the following precautions should be taken.

- ❖ Roll the top and side curtains for storage, do not fold.
- ❖ Store away from sunlight to avoid ultraviolet ray damage.
- ❖ Do not let vinyl side curtains come in contact with hot metal surfaces.
- ❖ Do not use or move canvas in temperatures below 0° F since it may cause the material to delaminate.
- ❖ Put the top down when towing at highway speeds.
- ❖ To help maintain the shape of your top and side curtains, reinstall them when your boat is not in use. This will reduce shrinkage.
- ❖ To clean your top use a mild detergent and a soft bristle brush. At the end of each season apply Lemon Pledge® to your top to replenish the oils and keep it pliable.

ACCESSORIES

12 VOLT POWER POINT

This receptacle can be used to power accessories that have a cigarette lighter-style plug. It provides 12 volt D. C. current.

BILGE PUMP

The bilge pump is controlled by a switch on the electrical panel. Some models are also equipped with an automatic pump switch that will activate the pump when the water in the bilge reaches a predetermined level.

PEDESTAL SEATS

Some boats are equipped with removable pedestal seats that have a locking feature. To avoid injuries from a dislodged seat be sure to secure the unoccupied seat.

FUSE BLOCK

A blade type fuse block is located under the steering console. This fuse block allows you to install up to six fused, permanently installed accessories. It provides both the 12 VDC and ground terminals.

DECALS/STRIPING

Graphics Use and Care

This boat is equipped with premium graphics made from 2 mil cast PVC films. These films are fully pigmented and where applicable have durable ink screened on top. If treated properly your graphics will last for many years. For best results follow the guidelines listed below.

- ❖ Keep your boat covered when not in use. This will extend the life of the graphics and the paint, exterior hardware, etc.
- ❖ Your graphics require no special care except periodic washing with a mild non-detergent cleaner. Cleaners developed for fiberglass or automotive finishes may also be used with a good quality automotive or marine wax to help your graphics look good for a long time.
- ❖ For repairs, contact your dealer or any computerized sign shop.

WARNING!

Do not use abrasive cleaners. Do not use strong solvents such as ketones, acetone, etc. as they will damage the graphic material.

Avoid contact with gasoline as it can cause damage to the graphics and finish of your boat. If gasoline is accidentally spilled on the graphics, wash off immediately.

When using high-pressure equipment, do not exceed 1200 PSI and do not hold wand closer than 12" to the surface.

LIVEWELL

If your boat is equipped with a livewell, it has a pump that draws water in through the hull of the boat. The water flows through a spray nozzle that breaks the water into many small streams that splash into the livewell, thereby introducing oxygen into the water.

The livewell pump operates from a switch located on the switch panel. With the drain plug installed, the water level rises until it reaches the overflow fitting in the tank. The overflow fitting maintains the maximum water level in the tank. See drawing (LIV129BA) for Sportsman and Sportsman Pro V.

Remove the drain plug to drain the livewell.

CAUTION

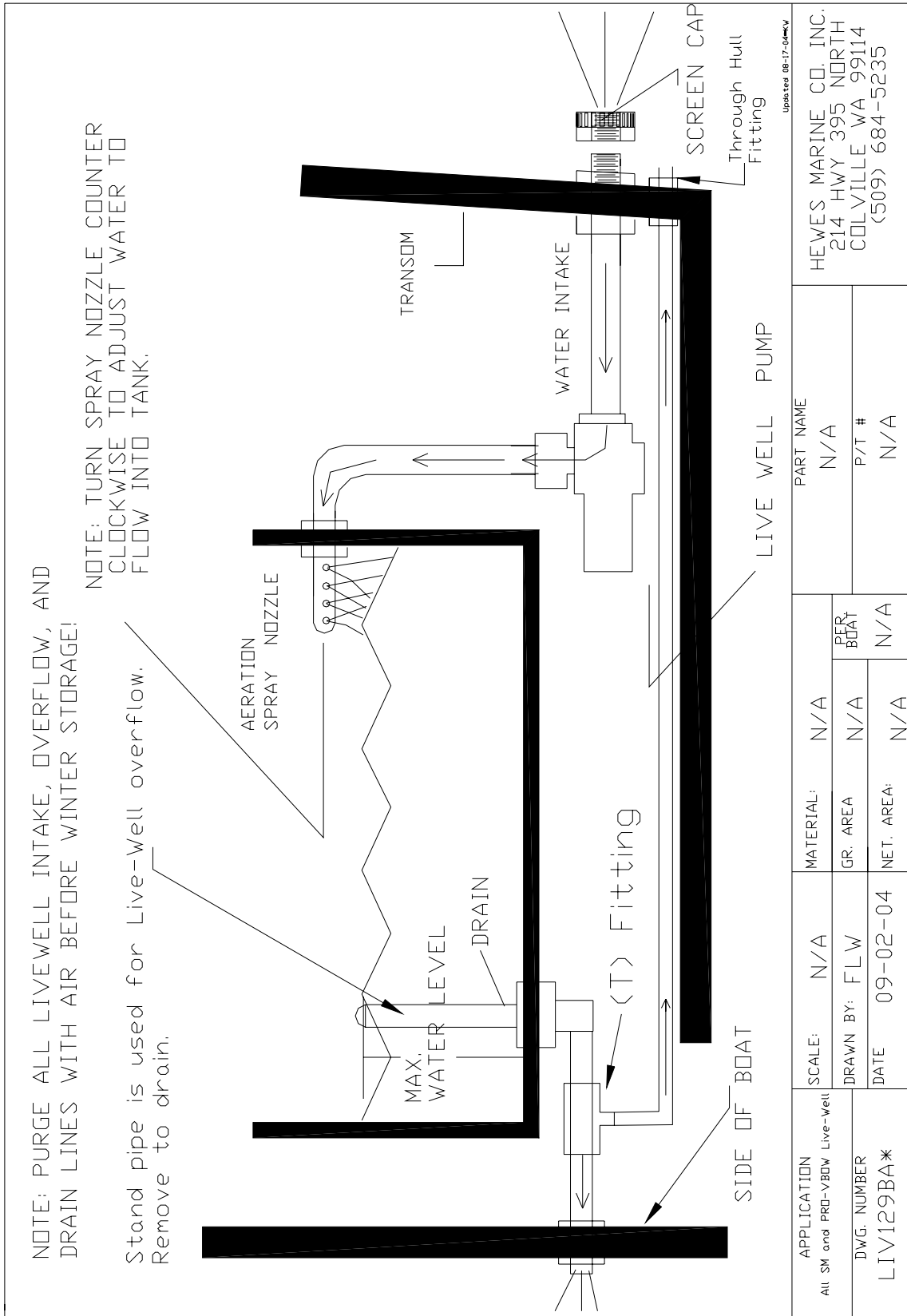
The livewell pump switch must be in the off position while the boat is under way or pump damage will occur.

CAUTION

To avoid damage to the livewell system, be sure it is empty during freezing weather. Water that freezes in the hoses will expand and could burst the hose.

SPORT JET BOW LIVEWELL

(LIV129BA)



NOTE: PURGE ALL LIVEWELL INTAKE, OVERFLOW, AND DRAIN LINES WITH AIR BEFORE WINTER STORAGE!

Stand pipe is used for Live-Well overflow. Remove to drain.

NOTE: TURN SPRAY NOZZLE COUNTER CLOCKWISE TO ADJUST WATER TO FLOW INTO TANK.

Updated 08-17-04

APPLICATION All SM and PRO-V80W Live-Well	SCALE:	N/A	MATERIAL:	N/A		PART NAME	
	DRAWN BY:	FLW	GR. AREA	N/A	N/A		N/A
DWG. NUMBER LIV129BA*	DATE	09-02-04	NET. AREA:	N/A	P/T #		N/A
HEWES MARINE CO. INC. 214 HWY 395 NORTH COLVILLE WA 99114 (509) 684-5235							

HEWES TRAILER

Many of our boats are sold with a matching Hewescraft trailer. These trailers are made specifically for Hewescraft and are designed to ensure the most safety and ease when trailering your boat. Hewescraft trailers are matched to your boat to accommodate the weight of the boat, motor, fuel, and an additional factor for gear. It is very important, however, that you do not overload your boat with heavy gear, coolers, toys, etc.

1. Tongue weight should be: 5-10% of the gross weight supported by trailer coupling ball. If GVW is 1,500 lbs tongue weight should be 75 - 150 lbs. A bath- room scale can be used to check the weight of the coupler. The ball and hitch should be the same size.
2. Check vehicle hitch weight recommendations. Bumper hitches are not recommended.
3. Supporting your boat's weight safely.
 - a. Roller and bunk trailers have different weight distribution characteristics.
 - i. For roller use, your boat should rest evenly on a pattern of rollers that are self-adjusting to carry the weight of the boat equally. The transom of your boat should rest on the rear-most roller.
 - ii. Bunk trailer users should make sure that the long, straight bunks evenly carry the boat's weight. If one side of your boat is higher than the other, adjust the bunks accordingly.

NOTE: The full hull bottom of your boat should be supported by the trailer bunks or rollers. This includes the Extended Transoms on many Hewescraft Sea Runner and Ocean Pro models, which are built as an extension of the hull bottom. No more than 3 inches of the hull bottom should extend beyond the support of the trailer bunks or rollers. Any structural failure occurring as a result of non-compliance with this requirement will not be warranted by Hewes Marine.



- b. If bow and center supports are used, make sure that no large amount of pressure is placed on the hull in any one spot.
- c. To prevent bouncing, ***keep tie-downs tightly fastened.*** If not secure, your boat can be damaged and your warranty voided.

4. Safety chains - your trailer hitch should have a proper place to attach the chains. Most state laws require that you crisscross the chains under the trailer tongue. This should prevent the trailer tongue from falling to the road in the event that the trailer coupler detaches from the hitch ball.

LAUNCHING CHECK LIST:

In the parking area:

- ❖ Remove motor supports.
- ❖ Remove tie downs.
- ❖ Disconnect trailer wiring from car if wiring is not waterproofed.
- ❖ Load and store gear on boat.
- ❖ Confirm all thru-hull valves are closed: these include washdown systems, floor fishbox and macerator toilets.
- ❖ **Remember the drain plug.**

At the ramp:

- ❖ Disconnect the bow safety chains.
- ❖ Connect bow line to control the boat during launch.
- ❖ Proceed to launch.

RETRIEVING THE BOAT:

After the boat is loaded on the trailer, ensure that all tie-downs (bow and transom) are secure and that the trailer lights have been reconnected.

Make a walk-around inspection to check for safety items - lights, items stored in boat, top down, engine position, etc.

HEWESCRAFT™ STEM TO STERN LIMITED WARRANTY

Hewes Marine Co. Inc. warrants to the original, retail purchaser that each new boat is free from defects in material and workmanship under normal pleasure use for the following warranty periods. (This warranty is automatically transferred to successive non-commercial owners. All time periods for warranties begin at the date of sale to original owner.)

1. Welded hull: Lifetime hull warranty on all welds to original owner.
 - a. Welded hull warranty is transferable to subsequent non-commercial owner for a total of 10 years from date of sale to the first owner.
 - b. Welded hull warranty for commercial owner shall be limited to 18 months from the date of sale to original owner. This warranty is non-transferable from commercial owner.

 2. Components manufactured and installed by Hewescraft™: Twelve (12) months.
 - a. Paint – 2 years.

 3. Components not manufactured by Hewescraft™ shall be warranted by the component mfg, and not by Hewescraft™. Components warranties include the following:
 - a. Kracor polyethylene gas tanks -1 year.
 - b. Amerikart polyethylene gas tanks -1 year
 - c. Coastline aluminum gas tanks - 1 year.
 - d. U-flex steering components - 2 years.
 - e. Johnson bilge pumps - 3 years.
 - f. Electrical parts (including switch panel, lights) – 1 year.
 - g. ¹Floorboards are pressure treated and have a lifetime warranty (see Greenwood warranty at end of Owner's Manual) against damage as a result of fungal decay, rot, termites or manufacturing defects.
 - h. Lectrotab Electric Trim Tabs – 5 years.

 4. Not covered by Hewescraft™ warranty:
 - a. Windshield breakage.
 - b. Tears in vinyl or fabric upholstery, carpet or canvas due to usage; de-lamination of top material due to exposure to temperatures below 0 degrees F.
 - c. Leakage around windshields, latches, tops or other apertures.
 - d. Normal maintenance, wear or deterioration.
 - e. Paint fading and oxidation; electrolysis and galvanic corrosion, damage due to road salt.
 - f. Staining of aluminum due to Sharkhide™ rubbing off or any other Sharkhide™ issues.
-

5. The following voids the Hewescraft™ warranty:
 - a. Damage resulting from the use of harmful solvents or cleaners, electrolysis, improper anti-fouling paints or metal attachment to the boat.
 - b. Damage caused by an accident, misuse or acts of God.
 - c. Use of motors larger than stated on the Coast Guard capacity label for that boat.
 - d. Damage resulting from inadequate trailer support, improperly designed or assembled trailers or improper trailering. It is Hewescraft's policy that the entire length of the aft bottom of the boat be fully supported on the trailer, with no portion longer than 3" of the bottom extending beyond the end of the trailer bunks, including the extended bottom on "ET" boats. Standard boat trailers are not recommended for use with our Extended Transom products, and any failure under this circumstance will not be warranted by Hewes Marine.

During the warranty period, Hewescraft™ will at its option, repair or replace, free of charge, including related labor charges, any warranted parts found to be defective due to faulty material or workmanship. This repair work is to be done by a Hewescraft™ authorized dealer or by Hewescraft™ within a reasonable time after the boat is delivered for repair. For repairs to be performed by a non-Hewescraft dealer, the repairs must be pre-approved in writing by Hewescraft prior to the commencement of work to be covered under the Hewescraft warranty.

The customer will be responsible for all related transportation charges and/or travel time.

This warranty does not apply to: boat launch or retrieval, towing and storage charges; telephone or rental charges of any type; inconvenience as a result of lost time, income or other consequential damages.

GREENWOOD FOREST PRODUCTS XL INDUSTRIAL PANELS™



THE XL INDUSTRIAL PANEL WARRANTY

Greenwood Forest Products provides the original purchaser, i.e. the owner of record, where extended life XL preservative-treated panels were installed by an approved original equipment manufacturer, with the following limited warranty.

- A lifetime warranty against damage to the panels as a result of fungal decay/rot.
- A lifetime warranty against damage to panels caused by termites and/or other wood eating insects.
- A lifetime warranty against manufacturing defects when such damage or defect would make the panel structurally unfit for its intended application.

Within 60 days of receipt of a claim accompanied by the original purchase invoice showing date of purchase, serial number and the name of the manufacturer, Greenwood Forest Products will arrange for the manufacturer or original owner to exchange the damaged XL panel. The original owner can expect Greenwood to additionally pay costs arising from the replacement of defective panels for a period of 10 years from the date of purchase. These costs could include charges for carpets, adhesives, fasteners and related labor charges. After the 10 year period from date of purchase, Greenwood will only exchange damaged panels and pay related labor charges.

In the event the first owner of record sells the subject boat, this warranty shall be transferred to the documented second owner for a period of 10 years from the date of purchase by the original owner of record.

WARRANTY LIMITATIONS

This warranty is limited only to those circumstances previously stated and in no case shall Greenwood Forest Products be held responsible for any of the following:

- Damage caused from anything other than fungal decay/rot, termites and/or other wood eating insects or panel workmanship.
- Associated damages claimed to be a result of damage caused by fungal decay/rot, termites and/or other wood eating insects or panel workmanship.
- Inherent wood characteristics such as checking, leafing, splitting and broken grain.
- Damage caused by improper installation or the use of corrosive fasteners.

Greenwood Forest Products' obligation under this warranty is limited to the replacement of damaged panels and those costs resulting, as described previously. Greenwood retains the right to have their representative inspect all panels concerned with any claim initiated under this warranty.

HOW TO SUBMIT A CLAIM

Send your claim to the manufacturer listed below. Be sure to include your original purchase invoice showing the date of purchase.

Greenwood Forest Products 15895 S.W. 72nd Avenue, Suite 200 Portland, OR 97224
Phone 503/670-9663 FAX 503/670-7755 WATS 1-800-333-3898

January, 1998