



Performance Bulletin – 160 Sportsman



Hewescraft® 160 Sportsman

Test Date 9/15/08

Length	16'5"
Beam	85"
Dry Weight (Boat only)	925 lbs
Maximum HP	90
Fuel Capacity	24
Weight as tested (Approximate)	1,683 lbs

Note: Test weight may include 1/2 tank of fuel, 1 battery, safety & test Equipment

Honda BF50 EFI

Horsepower	50 HP
Displacement	808 CC.
Dry Weight (engine)	214 lbs
Gear Ratio	2.08:1
Mounting Height	#1

Propellers

Material /Blades	SS/ 3
Series	Solas Series
Diameter/Pitch	11 1/8 x 13
Honda Part #	N/A

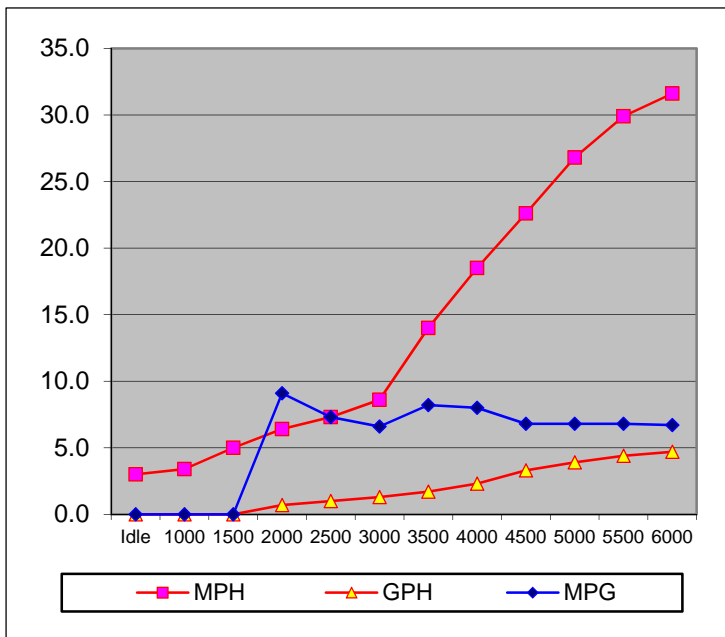
RPM	MPH	GPH	MPG
Idle	3.0	0.0	0.0
1000	3.4	0.0	0.0
1500	5.0	0.0	0.0
2000	6.4	0.7	9.1
2500	7.3	1.0	7.3
3000	8.6	1.3	6.6
3500	14.0	1.7	8.2
4000	18.5	2.3	8.0
4500	22.6	3.3	6.8
5000	26.8	3.9	6.8
5500	29.9	4.4	6.8
6000 (WOT)	31.6	4.7	6.7

Test Conditions

Number of People	2
Air Temperature (Fahrenheit)	85 ° F
Elevation (in feet above sea level)	1,290 ft.
Wind Velocity	0 - 5 mph



HONDA
MARINE



Time to plane: 6.25 Seconds Acceleration 0-20 MPH:9.4 Seconds

Notice to Consumer: The information and data contained in this Performance Bulletin is approximate and subject to many different factors and variables. It is provided as a guideline only and should not be relied upon as representative of actual performance. Your boat's performance may be different than the information contained in this Performance Bulletin due to various factors, including your boat's actual weight, wind and water conditions, temperature, humidity, elevation, bottom paint, boat options affecting wind/water drag and/or boat weight, and operator ability. Please confirm the specifications and performance data on your specific boat/engine combination with your dealer prior to purchase. Hewescraft reserves the right to change the specifications and performance data of this Performance Bulletin or engine without notice. This document contains valuable trademarks belonging to Hewescraft and other companies. Any references to other companies or their products are for identification purposes only, and are not intended to be an endorsement.



Performance Bulletin – 160 Sportsman



Hewescraft® 160 Sportsman

Test Date 7/15/08

Length	16'5"
Beam	85"
Dry Weight (Boat only)	925 lbs
Maximum HP	90
Fuel Capacity	24
Weight as tested (Approximate)	1,755 lbs

Note: Test weight may include 1/2 tank of fuel, 1 battery, safety & test Equipment

Honda BF 75

Horsepower	75 HP
Displacement	1.5 L.
Dry Weight (engine)	359 lbs
Gear Ratio	2.33:1
Mounting Height	#2

Propellers

Material /Blades	Aluminum/ 3
Series	Solas Series
Diameter/Pitch	13 ¾ x 17
Honda Part #	N/A

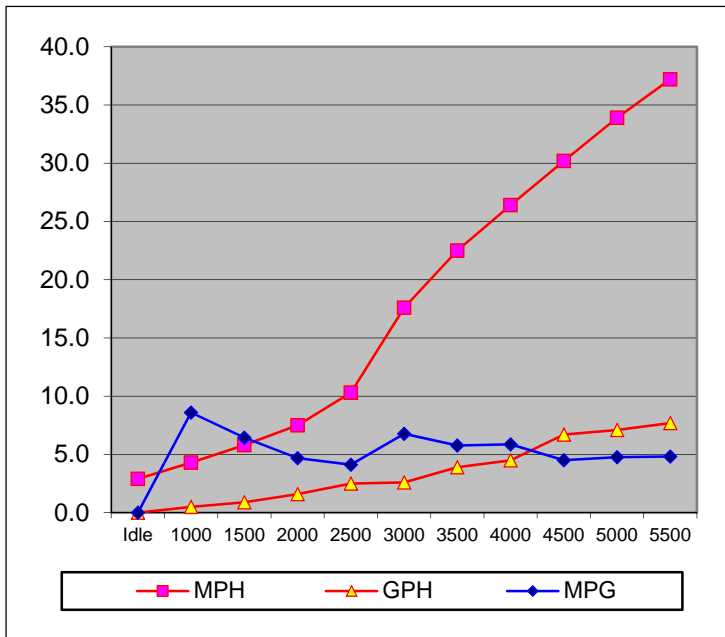
RPM	MPH	GPH	MPG
Idle	2.9	0.0	0.0
1000	4.3	0.5	8.6
1500	5.8	0.9	6.4
2000	7.5	1.6	4.7
2500	10.3	2.5	4.1
3000	17.6	2.6	6.8
3500	22.5	3.9	5.8
4000	26.4	4.5	5.9
4500	30.2	6.7	4.5
5000	33.9	7.1	4.8
5500 (WOT)	37.2	7.7	4.8

Test Conditions

Number of People	2
Air Temperature (Fahrenheit)	75 ° F
Elevation (in feet above sea level)	1,290 ft.
Wind Velocity	0 - 5 mph



HONDA
MARINE



Time to plane: 3.4 Seconds

Acceleration 0-20 MPH: 5.6 Seconds

Notice to Consumer: The information and data contained in this Performance Bulletin is approximate and subject to many different factors and variables. It is provided as a guideline only and should not be relied upon as representative of actual performance. Your boat's performance may be different than the information contained in this Performance Bulletin due to various factors, including your boat's actual weight, wind and water conditions, temperature, humidity, elevation, bottom paint, boat options affecting wind/water drag and/or boat weight, and operator ability. Please confirm the specifications and performance data on your specific boat/engine combination with your dealer prior to purchase. Hewescraft reserves the right to change the specifications and performance data of this Performance Bulletin or engine without notice. This document contains valuable trademarks belonging to Hewescraft and other companies. Any references to other companies or their products are for identification purposes only, and are not intended to be an endorsement.



Performance Bulletin – 180 Sportsman



Hewescraft® 180 Sportsman

Test Date 9/15/08

Length	18'5"
Beam	85"
Dry Weight (Boat only)	1,100 lbs
Maximum HP	115
Fuel Capacity	24
Weight as tested (Approximate)	1,878 lbs

Note: Test weight may include 1/3 tank of fuel, 1 battery, safety & test Equipment

RPM	MPH	GPH	MPG
Idle	3.0	0.0	0.0
1000	4.4	0.0	0.0
1500	6.0	0.8	7.5
2000	7.6	1.4	5.4
2500	11.2	2.0	5.6
3000	17.9	2.5	7.2
3500	22.4	2.8	8.0
4000	26.3	5.3	5.0
4500	30.1	6.6	4.6
5000	34.2	8.3	4.1
5500	39.7	9.0	4.4

Honda BF90

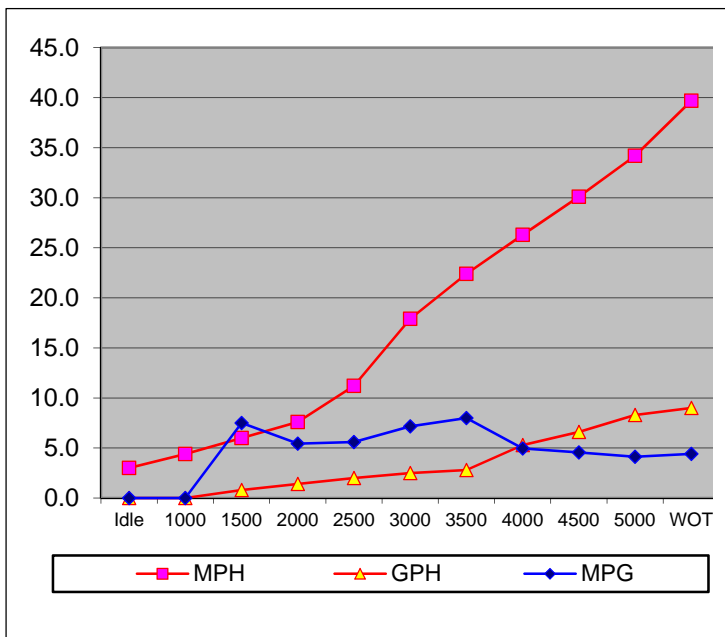
Horsepower	90 HP
Displacement	1.5 L.
Dry Weight (engine)	359 lbs
Gear Ratio	2.33:1
Mounting Height	#2

Propellers

Material /Blades	Aluminum/ 3
Series	Solas Series
Diameter/Pitch	13 ¼ x 17
Honda Part #	N/A

Test Conditions

Number of People	2
Air Temperature (Fahrenheit)	65 ° F
Elevation (in feet above sea level)	1,280 ft.
Wind Velocity	0 - 5 mph



Time to plane: 4.88 Seconds

Acceleration 0-20 MPH: N/A Seconds

Notice to Consumer: The information and data contained in this Performance Bulletin is approximate and subject to many different factors and variables. It is provided as a guideline only and should not be relied upon as representative of actual performance. Your boat's performance may be different than the information contained in this Performance Bulletin due to various factors, including your boat's actual weight, wind and water conditions, temperature, humidity, elevation, bottom paint, boat options affecting wind/water drag and/or boat weight, and operator ability. Please confirm the specifications and performance data on your specific boat/engine combination with your dealer prior to purchase. Hewescraft reserves the right to change the specifications and performance data of this Performance Bulletin or engine without notice. This document contains valuable trademarks belonging to Hewescraft and other companies. Any references to other companies or their products are for identification purposes only, and are not intended to be an endorsement.



Performance Bulletin – 180 Sportsman



Hewescraft® 180 Sportsman

Test Date 9/15/08

Length	18'5"
Beam	85"
Dry Weight (Boat only)	1,100 lbs
Maximum HP	115
Fuel Capacity	24
Weight as tested (Approximate)	2,059 lbs

Note: Test weight may include full tank of fuel, 1 battery, safety & test Equipment

Honda BF90

Horsepower	90 HP
Displacement	1.5 L.
Dry Weight (engine)	359 lbs
Gear Ratio	2.33:1
Mounting Height	#1

Propellers

Material /Blades	Aluminum/ 3
Series	Solas Series
Diameter/Pitch	13 ¼ x 17
Honda Part #	N/A

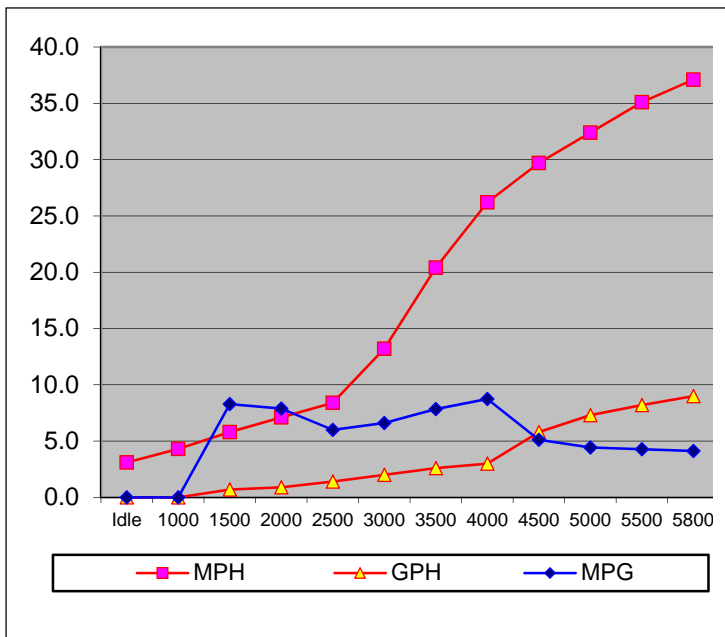
RPM	MPH	GPH	MPG
Idle	3.1	0.0	0.0
1000	4.3	0.0	0.0
1500	5.8	0.7	8.3
2000	7.1	0.9	7.9
2500	8.4	1.4	6.0
3000	13.2	2.0	6.6
3500	20.4	2.6	7.8
4000	26.2	3.0	8.7
4500	29.7	5.8	5.1
5000	32.4	7.3	4.4
5500	35.1	8.2	4.3
5800 (WOT)	37.1	9.0	4.1

Test Conditions

Number of People	2
Air Temperature (Fahrenheit)	85 ° F
Elevation (in feet above sea level)	1,290 ft.
Wind Velocity	0 - 5 mph



HONDA
MARINE



Time to plane: 4.88 Seconds

Acceleration 0-20 MPH: N/A Seconds

Notice to Consumer: The information and data contained in this Performance Bulletin is approximate and subject to many different factors and variables. It is provided as a guideline only and should not be relied upon as representative of actual performance. Your boat's performance may be different than the information contained in this Performance Bulletin due to various factors, including your boat's actual weight, wind and water conditions, temperature, humidity, elevation, bottom paint, boat options affecting wind/water drag and/or boat weight, and operator ability. Please confirm the specifications and performance data on your specific boat/engine combination with your dealer prior to purchase. Hewescraft reserves the right to change the specifications and performance data of this Performance Bulletin or engine without notice. This document contains valuable trademarks belonging to Hewescraft and other companies. Any references to other companies or their products are for identification purposes only, and are not intended to be an endorsement.



Performance Bulletin – 180 Sportsman



Hewescraft® 180 Sportsman

Test Date 7/15/08

Length	18'5"
Beam	85"
Dry Weight (Boat only)	1,100 lbs
Maximum HP	115
Fuel Capacity	24
Weight as tested (Approximate)	2,059 lbs

Note: Test weight may include 1/2 tank of fuel, 1 battery, safety & test Equipment

Honda BF 115

Horsepower	115 HP
Displacement	2.3 L.
Dry Weight (engine)	505 lbs
Gear Ratio	2.3:1
Mounting Height	#2

Propellers

Material /Blades	Aluminum/ 3
Series	Solas Series
Diameter/Pitch	13 ½ x 15
Honda Part #	N/A

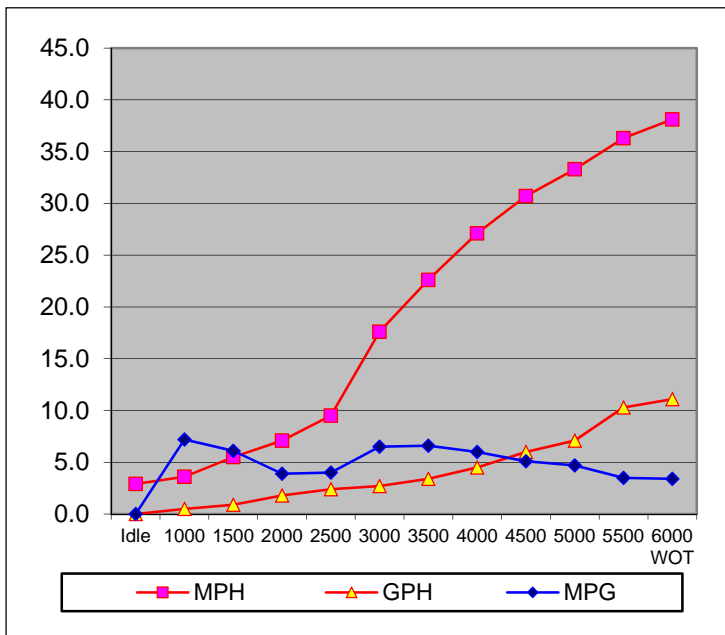
RPM	MPH	GPH	MPG
Idle	2.9	0.0	0.0
1000	3.6	0.5	7.2
1500	5.5	0.9	6.1
2000	7.1	1.8	3.9
2500	9.5	2.4	4.0
3000	17.6	2.7	6.5
3500	22.6	3.4	6.6
4000	27.1	4.5	6.0
4500	30.7	6.0	5.1
5000	33.3	7.1	4.7
5500	36.3	10.3	3.5
6000 (WOT)	38.1	11.1	3.4

Test Conditions

Number of People	2
Air Temperature (Fahrenheit)	75 ° F
Elevation (in feet above sea level)	1,290 ft.
Wind Velocity	0 - 5 mph



HONDA
MARINE



Notice to Consumer: The information and data contained in this Performance Bulletin is approximate and subject to many different factors and variables. It is provided as a guideline only and should not be relied upon as representative of actual performance. Your boat's performance may be different than the information contained in this Performance Bulletin due to various factors, including your boat's actual weight, wind and water conditions, temperature, humidity, elevation, bottom paint, boat options affecting wind/water drag and/or boat weight, and operator ability. Please confirm the specifications and performance data on your specific boat/engine combination with your dealer prior to purchase. Hewescraft reserves the right to change the specifications and performance data of this Performance Bulletin or engine without notice. This document contains valuable trademarks belonging to Hewescraft and other companies. Any references to other companies or their products are for identification purposes only, and are not intended to be an endorsement.

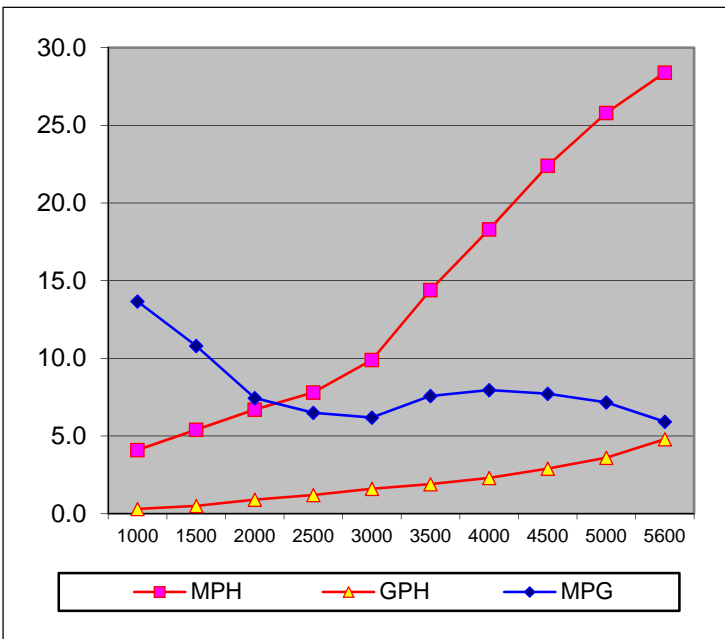


Performance Bulletin – 180 Sportsman



Hewes Craft 11.2.12
Copyright C-Images

RPM	MPH	GPH	MPG
1000	4.1	0.3	13.67
1500	5.4	0.5	10.80
2000	6.7	0.9	7.44
2500	7.8	1.2	6.50
3000	9.9	1.6	6.19
3500	14.4	1.9	7.58
4000	18.3	2.3	7.96
4500	22.4	2.9	6.28
5000	25.8	3.6	5.65
5600	28.4	4.8	5.01



Time to plane: 7.48 Seconds

Acceleration : N/A

Hewescraft® 180 Sportsman

Test Date 10/21/08

Length	18'5"
Beam	86"
Dry Weight (Boat only)	1,200 lbs
Maximum HP	115
Fuel Capacity	24 gallons
Weight as tested (Approximate)	1,941 lbs.

Note: Test weight includes 2/3 tank of fuel, 1 battery, safety & test Equipment

Yamaha F50TLR

Horsepower	50 HP
Displacement	60.8 cu. in.
Dry Weight (engine)	237 lbs
Gear Ratio	1.85
Mounting Height	#2

Propellers

Material /Blades	Aluminum/ 3 blade
Series	Aluminum Series
Diameter/Pitch	11 5/8 x 11
Yamaha Part #	69W-45947-00-EL

Test Conditions

Number of People	2
Air Temperature (Fahrenheit)	63 °/ 48° F
Elevation (in feet above sea level)	1,300 ft.
Wind Velocity	0-5 mph



Notice to Consumer: The information and data contained in this Performance Bulletin is approximate and subject to many different factors and variables. It is provided as a guideline only and should not be relied upon as representative of actual performance. Your boat's performance may be different than the information contained in this Performance Bulletin due to various factors, including your boat's actual weight, wind and water conditions, temperature, humidity, elevation, bottom paint, boat options affecting wind/water drag and/or boat weight, and operator ability. Please confirm the specifications and performance data on your specific boat/engine combination with your dealer prior to purchase. Hewescraft reserves the right to change the specifications and performance data of this Performance Bulletin or engine without notice. This document contains valuable trademarks belonging to Hewescraft and other companies. Any references to other companies or their products are for identification purposes only, and are not intended to be an endorsement.

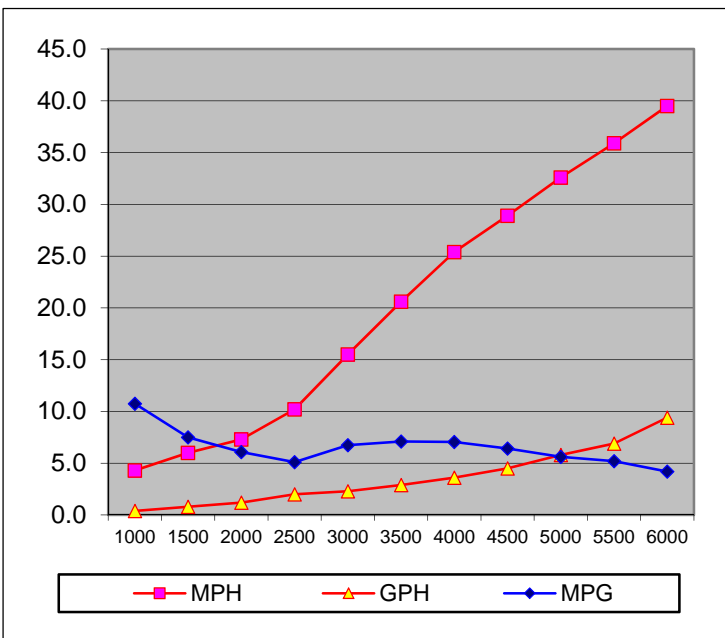


Performance Bulletin – 180 Sportsman



Hewes Craft 11.2.12
Copyright C-Images

RPM	MPH	GPH	MPG
1000	4.3	0.4	10.75
1500	6.0	0.8	7.50
2000	7.3	1.2	6.08
2500	10.2	2.0	5.10
3000	15.5	2.3	6.74
3500	20.6	2.9	7.10
4000	25.4	3.6	7.06
4500	28.9	4.5	6.42
5000	32.6	5.8	5.62
5500	35.9	6.9	5.20
6000	39.5	9.4	4.20



Time to plane: 4.04 Seconds

Acceleration: N/A

Hewescraft® 180 Sportsman

Test Date 10/22/08

Length	18'5"
Beam	86"
Dry Weight (Boat only)	1,200 lbs
Maximum HP	115
Fuel Capacity	33 gallons
Weight as tested (Approximate)	2,073 lbs.

Note: Test weight includes 2/3 tank of fuel, 1 battery, safety & test Equipment

Yamaha F90TLR

Horsepower	90 HP
Displacement	97 cu. in.
Dry Weight (engine)	369 lbs
Gear Ratio	2.31
Mounting Height	#2

Propellers

Material /Blades	Aluminum/ 3 blade
Series	Aluminum Series
Diameter/Pitch	13 x 19
Yamaha Part #	6E5-45941-00-EL

Test Conditions

Number of People	2
Air Temperature (Fahrenheit)	54 °/ 47° F
Elevation (in feet above sea level)	1,300 ft.
Wind Velocity	0-5 mph



Notice to Consumer: The information and data contained in this Performance Bulletin is approximate and subject to many different factors and variables. It is provided as a guideline only and should not be relied upon as representative of actual performance. Your boat's performance may be different than the information contained in this Performance Bulletin due to various factors, including your boat's actual weight, wind and water conditions, temperature, humidity, elevation, bottom paint, boat options affecting wind/water drag and/or boat weight, and operator ability. Please confirm the specifications and performance data on your specific boat/engine combination with your dealer prior to purchase. Hewescraft reserves the right to change the specifications and performance data of this Performance Bulletin or engine without notice. This document contains valuable trademarks belonging to Hewescraft and other companies. Any references to other companies or their products are for identification purposes only, and are not intended to be an endorsement.

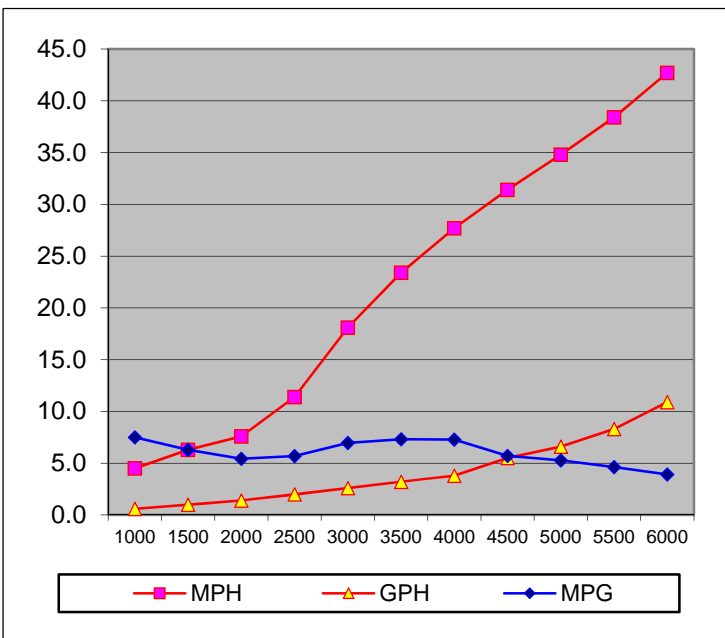


Performance Bulletin – 180 Sportsman



Hewes Craft 11.2.12
Copyright C-Images

RPM	MPH	GPH	MPG
1000	4.5	0.6	7.50
1500	6.3	1.0	6.30
2000	7.6	1.4	5.43
2500	11.4	2.0	5.70
3000	18.1	2.6	6.96
3500	23.4	3.2	7.31
4000	27.7	3.8	7.29
4500	31.4	5.5	5.71
5000	34.8	6.6	5.27
5500	38.4	8.3	4.63
6000	42.7	10.9	3.92



Time to plane: 3.39 Seconds

Acceleration: N/A

Hewescraft® 180 Sportsman

Test Date 10/23/08

Length	18'5"
Beam	86"
Dry Weight (Boat only)	1,200 lbs
Maximum HP	115
Fuel Capacity	24 gallons
Weight as tested (Approximate)	2,106 lbs.

Note: Test weight includes 2/3 tank of fuel, 1 battery, safety & test Equipment

Yamaha F115TLR

Horsepower	115 HP
Displacement	106.2 cu. in.
Dry Weight (engine)	402 lbs
Gear Ratio	2.15
Mounting Height	#2

Propellers

Material /Blades	Aluminum/ 3 blade
Series	Aluminum Series
Diameter/Pitch	13 x 19
Yamaha Part #	6E5-45941-00-EL

Test Conditions

Number of People	2
Air Temperature (Fahrenheit)	39° / 45° F
Elevation (in feet above sea level)	1,300 ft.
Wind Velocity	0-5 mph



Notice to Consumer: The information and data contained in this Performance Bulletin is approximate and subject to many different factors and variables. It is provided as a guideline only and should not be relied upon as representative of actual performance. Your boat's performance may be different than the information contained in this Performance Bulletin due to various factors, including your boat's actual weight, wind and water conditions, temperature, humidity, elevation, bottom paint, boat options affecting wind/water drag and/or boat weight, and operator ability. Please confirm the specifications and performance data on your specific boat/engine combination with your dealer prior to purchase. Hewescraft reserves the right to change the specifications and performance data of this Performance Bulletin or engine without notice. This document contains valuable trademarks belonging to Hewescraft and other companies. Any references to other companies or their products are for identification purposes only, and are not intended to be an endorsement.

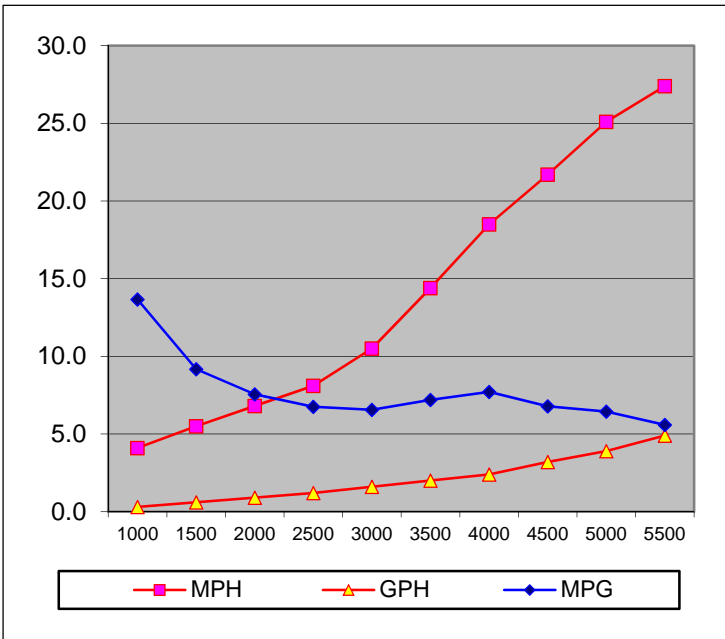


Performance Bulletin – 200 Sportsman



Hewes Craft 11.2.12
Copyright C-Images

RPM	MPH	GPH	MPG
1000	4.1	0.3	13.67
1500	5.5	0.6	9.17
2000	6.8	0.9	7.56
2500	8.1	1.2	6.75
3000	10.5	1.6	6.56
3500	14.4	2.0	7.20
4000	18.5	2.4	7.21
4500	21.7	3.2	6.78
5000	25.1	3.9	6.44
5500	27.4	4.9	5.59



Time to plane: 7.90 Seconds

Acceleration: N/A

Hewescraft® 200 Sportsman

Test Date 10/22/08

Length	20'5"
Beam	86"
Dry Weight (Boat only)	1,200 lbs
Maximum HP	150
Fuel Capacity	33 gallons
Weight as tested (Approximate)	2,029 lbs.

Note: Test weight includes 1.2 tank of fuel, 1 battery, safety & test Equipment

Yamaha F50TLR

Horsepower	50 HP
Displacement	60.8 cu. in.
Dry Weight (engine)	237 lbs
Gear Ratio	1.85
Mounting Height	#2

Propellers

Material /Blades	Aluminum/ 3 blade
Series	Aluminum Series
Diameter/Pitch	11 5/8 x 11
Yamaha Part #	69W-45947-00-EL

Test Conditions

Number of People	2
Air Temperature (Fahrenheit)	53 °/ 48° F
Elevation (in feet above sea level)	1,300 ft.
Wind Velocity	5 - 10mph



Notice to Consumer: The information and data contained in this Performance Bulletin is approximate and subject to many different factors and variables. It is provided as a guideline only and should not be relied upon as representative of actual performance. Your boat's performance may be different than the information contained in this Performance Bulletin due to various factors, including your boat's actual weight, wind and water conditions, temperature, humidity, elevation, bottom paint, boat options affecting wind/water drag and/or boat weight, and operator ability. Please confirm the specifications and performance data on your specific boat/engine combination with your dealer prior to purchase. Hewescraft reserves the right to change the specifications and performance data of this Performance Bulletin or engine without notice. This document contains valuable trademarks belonging to Hewescraft and other companies. Any references to other companies or their products are for identification purposes only, and are not intended to be an endorsement.



Performance Bulletin – 200 Sportsman



Hewescraft® 200 Sportsman

Test Date 10/22/05

Length	20'5"
Beam	86"
Dry Weight (Boat only)	1,200 lbs
Maximum HP	150
Fuel Capacity	33 gallons
Weight as tested (Approximate)	2,161 lbs.

Note: Test weight includes 3/4 tank of fuel, 1 battery, safety & test Equipment

Yamaha F90TLR

Horsepower	90 HP
Displacement	97 cu. in.
Dry Weight (engine)	369 lbs
Gear Ratio	2.31
Mounting Height	#2

Propellers

Material /Blades	Aluminum/ 3 blade
Series	Aluminum Series
Diameter/Pitch	13 x 19
Yamaha Part #	6E5-45941-00-EL

RPM	MPH	GPH	MPG
1000	4.1	0.4	10.25
1500	6.1	0.7	8.71
2000	7.6	1.2	6.33
2500	10.3	1.9	5.42
3000	15.0	2.4	6.25
3500	20.0	2.9	6.90
4000	24.6	3.8	6.47
4500	28.0	4.9	5.71
5000	31.5	6.3	5.00
5500	35.0	7.7	4.55
5900	38.1	9.4	4.05

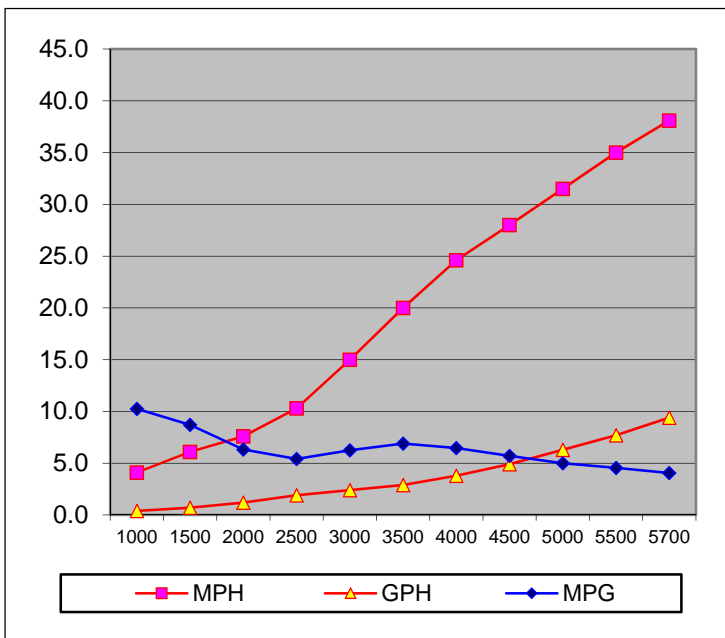
Test Conditions

Number of People	2
Air Temperature (Fahrenheit)	37 °/ 46° F
Elevation (in feet above sea level)	1,300 ft.

Wind Velocity 5-10 mph



Notice to Consumer: The information and data contained in this Performance Bulletin is approximate and subject to many different factors and variables. It is provided as a guideline only and should not be relied upon as representative of actual performance. Your boat's performance may be different than the information contained in this Performance Bulletin due to various factors, including your boat's actual weight, wind and water conditions, temperature, humidity, elevation, bottom paint, boat options affecting wind/water drag and/or boat weight, and operator ability. Please confirm the specifications and performance data on your specific boat/engine combination with your dealer prior to purchase. Hewescraft reserves the right to change the specifications and performance data of this Performance Bulletin or engine without notice. This document contains valuable trademarks belonging to Hewescraft and other companies. Any references to other companies or their products are for identification purposes only, and are not intended to be an endorsement.



Time to plane: 4.66 Seconds

Acceleration : N/A

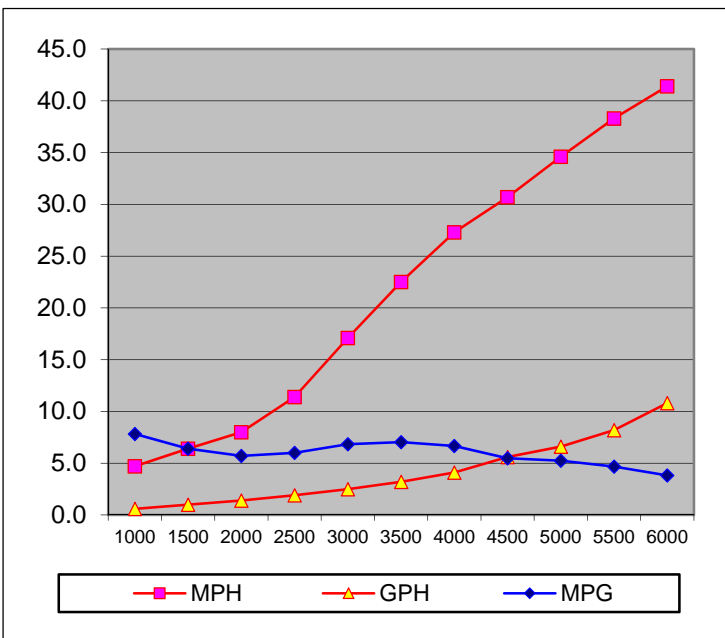


Performance Bulletin – 200 Sportsman



Hewes Craft 11.2.12
Copyright C-Images

RPM	MPH	GPH	MPG
1000	4.7	0.6	7.83
1500	6.4	1.0	6.40
2000	8.0	1.4	5.71
2500	11.4	1.9	6.00
3000	17.1	2.5	6.84
3500	22.5	3.2	7.03
4000	27.3	4.1	6.66
4500	30.7	5.6	5.48
5000	34.6	6.6	5.24
5500	38.3	8.2	4.67
6000	41.4	10.8	3.83



Time to plane: 4.34 Seconds

Acceleration: N/A

Hewescraft® 200 Sportsman

Test Date 10/21/08

Length	18'5"
Beam	86"
Dry Weight (Boat only)	1,300 lbs
Maximum HP	150
Fuel Capacity	33 gallons
Weight as tested (Approximate)	2,194 lbs.

Note: Test weight includes 2/3 tank of fuel, 1 battery, safety & test Equipment

Yamaha F115TLR

Horsepower	115 HP
Displacement	106.2 cu. in.
Dry Weight (engine)	402 lbs
Gear Ratio	2.15
Mounting Height	#2

Propellers

Material /Blades	Aluminum/ 3 blade
Series	Aluminum Series
Diameter/Pitch	13 x 19
Yamaha Part #	6E5-45941-00-EL

Test Conditions

Number of People	2
Air Temperature (Fahrenheit)	60 °/ 48° F
Elevation (in feet above sea level)	1,300 ft.
Wind Velocity	0-5 mph



Notice to Consumer: The information and data contained in this Performance Bulletin is approximate and subject to many different factors and variables. It is provided as a guideline only and should not be relied upon as representative of actual performance. Your boat's performance may be different than the information contained in this Performance Bulletin due to various factors, including your boat's actual weight, wind and water conditions, temperature, humidity, elevation, bottom paint, boat options affecting wind/water drag and/or boat weight, and operator ability. Please confirm the specifications and performance data on your specific boat/engine combination with your dealer prior to purchase. Hewescraft reserves the right to change the specifications and performance data of this Performance Bulletin or engine without notice. This document contains valuable trademarks belonging to Hewescraft and other companies. Any references to other companies or their products are for identification purposes only, and are not intended to be an endorsement.