



# Performance Bulletin – 220 Ocean Pro ET



## Hewescraft® 220 Ocean Pro ET

Test Date 9/15/16

Length	24'8"
Beam	102'
Dry Weight (Boat only)	3,800 lbs
Maximum HP	250
Fuel Capacity	100 gal
Weight as Tested (approx.)	4,351 lbs

Note: Test weight includes 94 gallons of fuel, 1 battery, safety & test Equipment

## Honda BF225

Horsepower	225 HP
Displacement	3.5L V6 VTEC
Dry Weight (engine)	599 lbs
Gear Ratio	1.86:1
Mounting Height	#2

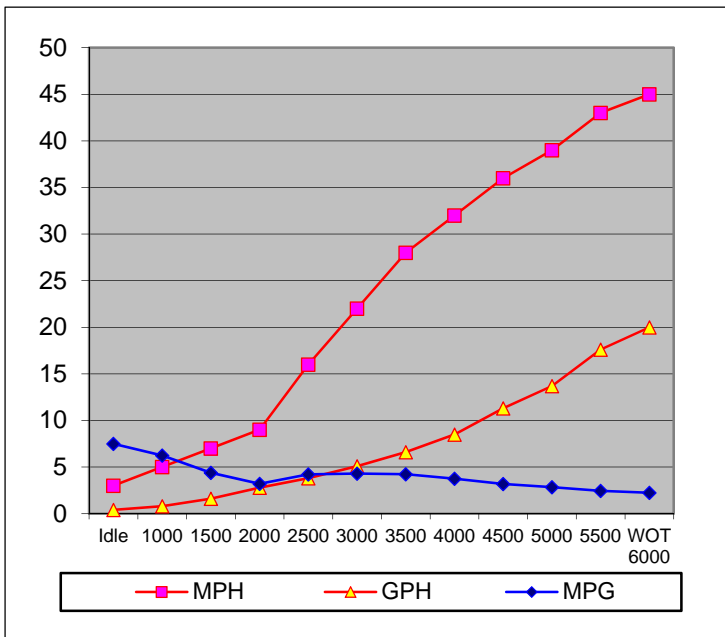
## Propellers

Prop (Material/Blades)	3 Blade/ SS
Prop Manufacturer	Stainless Steel
Prop (Diameter/Pitch)	15 x 17

RPM	MPH Hewes	GPH	MPG
Idle	3.0	0.40	7.50
1000	5.0	0.80	6.25
1500	7.0	1.60	4.38
2000	9.0	2.80	3.21
2500	16.0	3.80	4.21
3000	22.0	5.10	4.31
3500	28.0	6.60	4.24
4000	32.0	8.50	3.76
4500	36.0	11.30	3.19
5000	39.0	13.70	2.85
5500	43.0	17.60	2.44
WOT 6000	45.0	20.00	2.25

## Test Conditions

Number of People	2
Air Temperature (Fahrenheit)	70° F
Elevation (in feet above sea level)	1250 ft.
Wind Velocity	0 - 5 mph



Time to plane: 3.9 Seconds    Acceleration 0-20 MPH: -----



# HONDA MARINE

**Notice to Consumer:** The information and data contained in this Performance Bulletin is approximate and subject to many different factors and variables. It is provided as a guideline only and should not be relied upon as representative of actual performance. Your boat's performance may be different than the information contained in this Performance Bulletin due to various factors, including your boat's actual weight, wind and water conditions, temperature, humidity, elevation, bottom paint, boat options affecting wind/water drag and/or boat weight, and operator ability. Please confirm the specifications and performance data on your specific boat/engine combination with your dealer prior to purchase. Honda reserves the right to change the specifications and performance data of this Performance Bulletin or engine without notice. This document contains valuable trademarks belonging to Hewescraft and other companies. Any references to other companies or their products are for identification purposes only, and are not intended to be an endorsement.



# Performance Bulletin – 220 Ocean Pro HT



## Hewescraft® 220 Ocean Pro HT

Test Date 7/15/08

Length	24'5"
Beam	102'
Dry Weight (Boat only)	2,600 lbs
Maximum HP	250
Fuel Capacity	85 gal
Weight as Tested (approx.)	3,700 lbs

Note: Test weight includes 20 gallons of fuel, 1 battery, safety & test Equipment

## Honda BF200

Horsepower	200 HP
Displacement	3.5L
Dry Weight (engine)	599 lbs
Gear Ratio	1.86:1
Mounting Height	#2

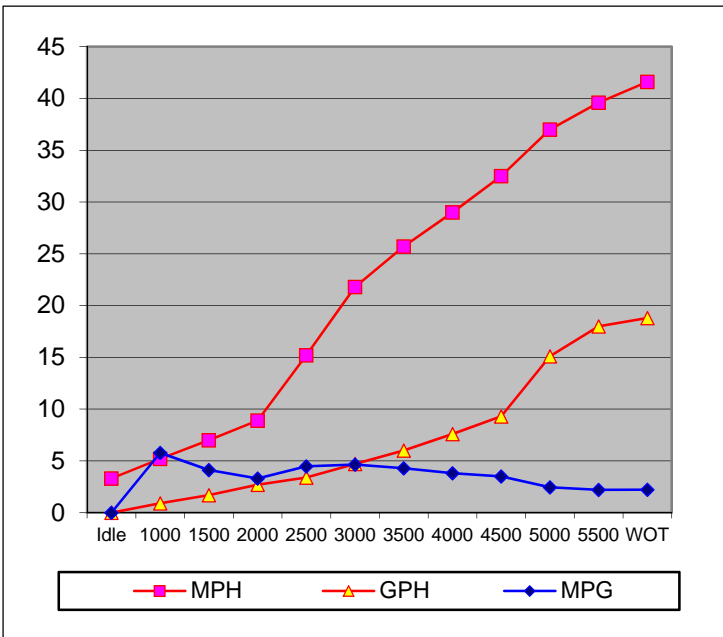
## Propellers

Prop (Material/Blades)	3 Blade/ Aluminum
Prop Manufacturer	Solas
Prop (Diameter/Pitch)	15 ¼ x 15

RPM	MPH Hewes	GPH	MPG
Idle	3.3	0.0	0.0
1000	5.2	0.9	5.8
1500	7.0	1.7	4.1
2000	8.9	2.7	3.3
2500	15.2	3.4	4.5
3000	21.8	4.7	4.6
3500	25.7	6.0	4.3
4000	29.0	7.6	3.8
4500	32.5	9.3	3.5
5000	37.0	15.1	2.5
5500	39.6	18.0	2.2
WOT	41.6	18.8	2.2

## Test Conditions

Number of People	4
Air / Water Temperature (Fahrenheit)	75° F
Elevation (in feet above sea level)	1,300 ft.
Wind Velocity	0 - 5 mph



Time to plane: 4.2 Seconds    Acceleration 0-20 MPH: 5.2 Seconds



**Notice to Consumer:** The information and data contained in this Performance Bulletin is approximate and subject to many different factors and variables. It is provided as a guideline only and should not be relied upon as representative of actual performance. Your boat's performance may be different than the information contained in this Performance Bulletin due to various factors, including your boat's actual weight, wind and water conditions, temperature, humidity, elevation, bottom paint, boat options affecting wind/water drag and/or boat weight, and operator ability. Please confirm the specifications and performance data on your specific boat/engine combination with your dealer prior to purchase. Honda reserves the right to change the specifications and performance data of this Performance Bulletin or engine without notice. This document contains valuable trademarks belonging to Hewescraft and other companies. Any references to other companies or their products are for identification purposes only, and are not intended to be an endorsement.



# Performance Bulletin – 220 Ocean Pro HT



## Hewescraft® 220 Ocean Pro HT

Test Date 2/12/09

Length	24'3"
Beam	102'
Dry Weight (Boat only)	2,600 lbs
Maximum HP	250
Fuel Capacity	85 gal
Weight as Tested (approx.)	3,949 lbs

Note: Test weight includes 20 gallons of fuel, 1 battery, safety & test Equipment

## Honda BF225

Horsepower	225 HP
Displacement	3.5L
Dry Weight (engine)	589 lbs
Gear Ratio	1.86:1
Mounting Height	#2

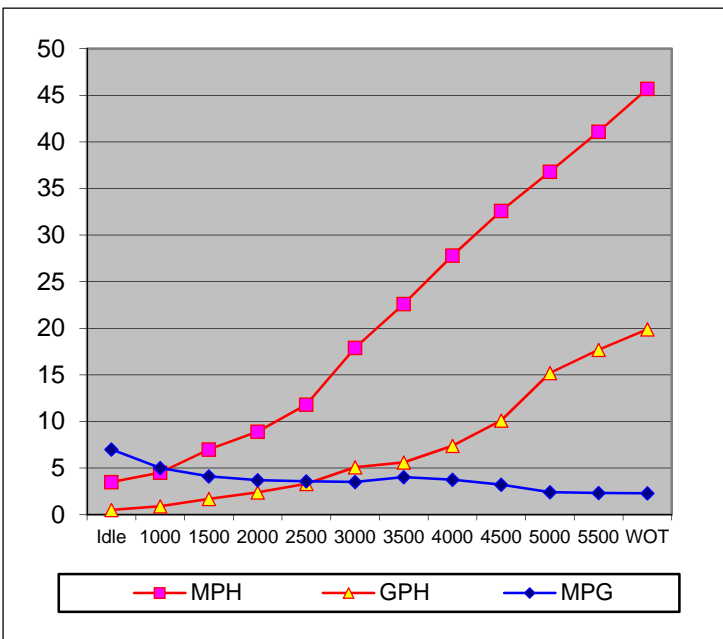
## Propellers

Prop (Material/Blades)	3 Blade/ SS
Prop Manufacturer	Apollo
Prop (Diameter/Pitch)	14 5/8 x 16

RPM	MPH Hewes	GPH	MPG
Idle	3.3	0.5	7.0
1000	4.5	0.9	5.0
1500	7.0	1.7	4.1
2000	8.9	2.4	3.7
2500	11.8	3.3	3.6
3000	17.9	5.1	3.5
3500	22.6	5.6	4.0
4000	27.8	7.4	3.8
4500	32.6	10.1	3.2
5000	36.8	15.2	2.4
5500	41.1	17.7	2.3
WOT	45.7	19.9	2.3

## Test Conditions

Number of People	2
Air / Water Temperature (Fahrenheit)	42° F
Elevation (in feet above sea level)	650 ft.
Wind Velocity	0 - 5 mph



Time to plane: 4.3 Seconds    Acceleration 0-20 MPH: 5.4 Seconds

**Notice to Consumer:** The information and data contained in this Performance Bulletin is approximate and subject to many different factors and variables. It is provided as a guideline only and should not be relied upon as representative of actual performance. Your boat's performance may be different than the information contained in this Performance Bulletin due to various factors, including your boat's actual weight, wind and water conditions, temperature, humidity, elevation, bottom paint, boat options affecting wind/water drag and/or boat weight, and operator ability. Please confirm the specifications and performance data on your specific boat/engine combination with your dealer prior to purchase. Honda reserves the right to change the specifications and performance data of this Performance Bulletin or engine without notice. This document contains valuable trademarks belonging to Hewescraft and other companies. Any references to other companies or their products are for identification purposes only, and are not intended to be an endorsement.



# Performance Bulletin – 220 Ocean Pro HT



## Hewescraft® 220 Ocean Pro HT

Test Date 9/12/15

Length	24'5"
Beam	102'
Dry Weight (Boat only)	3200 lbs
Maximum HP	250
Fuel Capacity	100 gal
Weight as Tested (approximate)	N/A

Note: Test weight includes 20 gallons of fuel, 1 battery, safety & test Equipment

## Honda BF250

Horsepower	250 HP
Displacement	3.5L
Dry Weight (engine)	589 lbs
Gear Ratio	1.86:1
Mounting Height	#1

## Propeller

Prop (Material/Blades)	3 Blade/ SS
Prop Manufacturer	Solas
Prop (Diameter/Pitch)	15 ¾ x 15

RPM	MPH Hewes	GPH	MPG
1000	5	.7	7.1
1500	6	1.2	5
2000	7	2.2	3.2
2500	10	2.6	3.8
3000	14	4.0	3.5
3500	20	5.3	3.8
4000	25	7.3	3.4
4500	30	8.7	3.4
5000	34	12.1	2.8
5500	37	15.0	2.5
6000	43	21.7	2.0

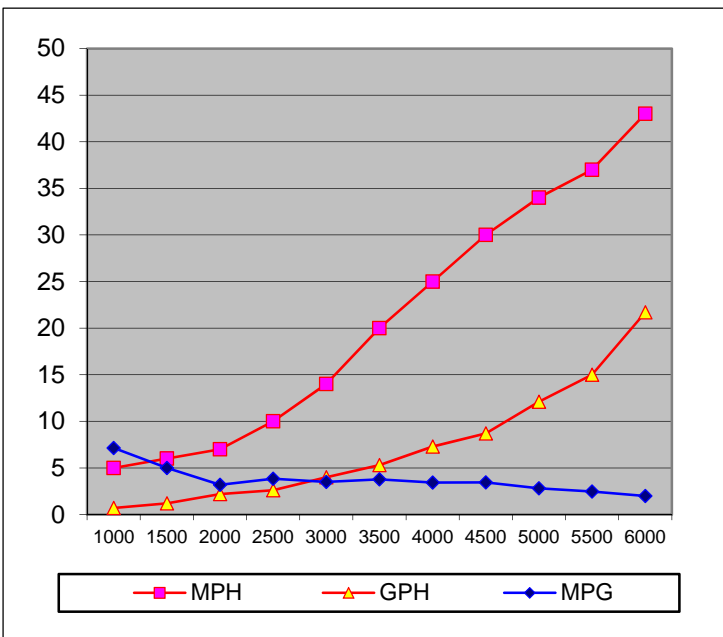
## Test Conditions

Number of People	4
Air / Water Temperature (Fahrenheit)	70° F
Elevation (in feet above sea level)	1,630 ft.
Wind Velocity	SE 2 mph



**HONDA**  
**MARINE**

**Notice to Consumer:** The information and data contained in this Performance Bulletin is approximate and subject to many different factors and variables. It is provided as a guideline only and should not be relied upon as representative of actual performance. Your boat's performance may be different than the information contained in this Performance Bulletin due to various factors, including your boat's actual weight, wind and water conditions, temperature, humidity, elevation, bottom paint, boat options affecting wind/water drag and/or boat weight, and operator ability. Please confirm the specifications and performance data on your specific boat/engine combination with your dealer prior to purchase. Honda reserves the right to change the specifications and performance data of this Performance Bulletin or engine without notice. This document contains valuable trademarks belonging to Hewescraft and other companies. Any references to other companies or their products are for identification purposes only, and are not intended to be an endorsement.



Time to plane: 4 Seconds      Acceleration 0-20 MPH: 7 Seconds





# Performance Bulletin – 220 Ocean Pro ET HT



## Hewescraft® 220 Ocean Pro ET HT

Test Date 1/16/16

Length	24'3"
Beam	102"
Dry Weight (Boat only)	3200 lbs
Maximum HP	250
Fuel Capacity (at testing)	100 gal
Weight as Tested (approximate)	4500 lbs

Note: Test weight includes 20 gallons of fuel, 1 battery, safety & test Equipment

## Mercury 225 Verado

Horsepower	225 HP
Displacement	2.6L
Dry Weight (engine)	668 lbs
Gear Ratio	1.85:1
Mounting Height	#1

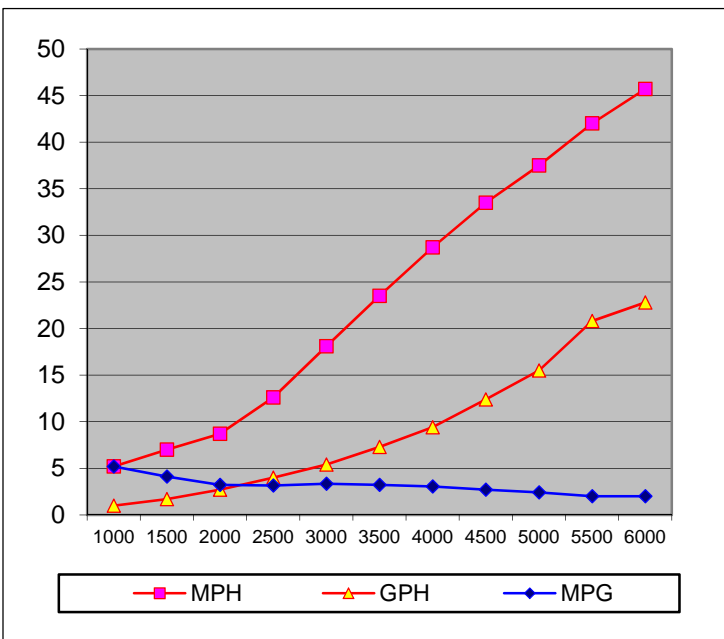
## Propellers

Material/Blades	SS / 3 Blades
Series	Solas
Diameter/Pitch	14 x 17
Mercury Part #	N/A

RPM	MPH	GPH	MPG
1000	5.2	1	5.20
1500	7	1.7	4.12
2000	78.7	2.7	3.22
2500	12.6	4	3.15
3000	18.1	5.4	3.35
3500	23.5	7.3	3.22
4000	28.7	9.4	3.05
4500	33.5	12.4	2.70
5000	37.5	15.5	2.41
5500	42	20.8	2.01
6000 WOT	45.7	22.8	2.00

## Test Conditions

Number of People	2
Air / Water Temperature (Fahrenheit)	45° F
Elevation (in feet above sea level)	N/A ft.
Wind Velocity	N/A mph



**Notice to Consumer:** The information and data contained in this Performance Bulletin is approximate and subject to many different factors and variables. It is provided as a guideline only and should not be relied upon as representative of actual performance. Your boat's performance may be different than the information contained in this Performance Bulletin due to various factors, including your boat's actual weight, wind and water conditions, temperature, humidity, elevation, bottom paint, boat options affecting wind/water drag and/or boat weight, and operator ability. Please confirm the specifications and performance data on your specific boat/engine combination with your dealer prior to purchase. Mercury reserves the right to change the specifications and performance data of this Performance Bulletin or engine without notice. This document contains valuable trademarks belonging to Hewescraft and other companies. Any references to other companies or their products are for identification purposes only, and are not intended to be an endorsement.

Time to plane: 3 Seconds    Acceleration 0-20 MPH: 5 Seconds



# Performance Bulletin – 220 Ocean Pro ET HT



## Hewescraft® 220 Ocean Pro ET HT

Test Date 10/23/08

Length	24'3"
Beam	102"
Dry Weight (Boat only)	2,600 lbs
Maximum HP	225
Fuel Capacity	85
Weight as tested (Approximate)	3,802 lbs

Note: Test weight includes 1/3 tank of fuel, 1 battery, safety & test Equipment

## Yamaha F115TXR

Horsepower	115 HP
Displacement	106.2 cu. in.
Dry Weight (engine)	412 lbs
Gear Ratio	2.15
Mounting Height	#2

## Propellers

Material /Blades	Aluminum / 3
Series	Aluminum Series
Diameter/Pitch	13 1/2 x 15
Yamaha Part #	6E5-45947-00-EL

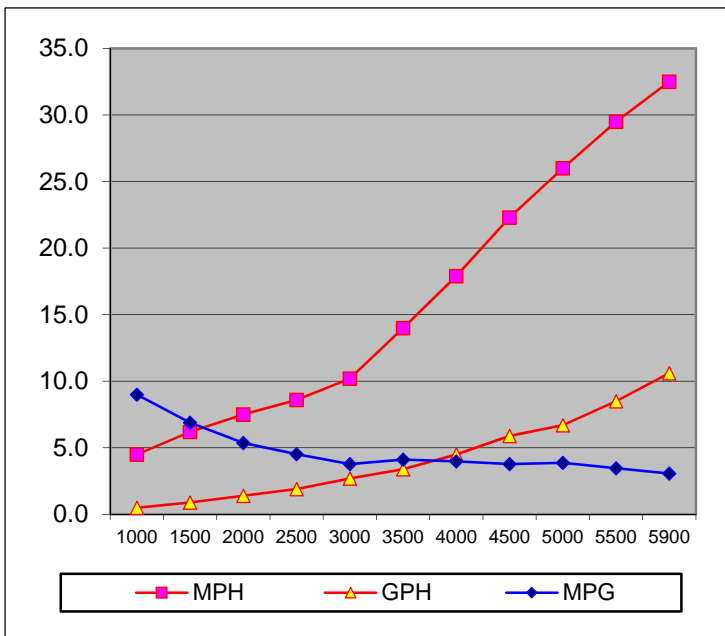
RPM	MPH	GPH	MPG
1000	5.4	0.5	9.00
1500	6.2	0.9	6.89
2000	7.5	1.4	5.36
2500	8.6	1.9	4.53
3000	10.2	2.7	3.78
3500	14.0	3.4	4.12
4000	17.9	4.5	3.98
4500	22.3	5.9	3.78
5000	26.0	6.7	3.88
5500	29.5	8.5	3.47
5900	32.5	10.6	3.07

## Test Conditions

Number of People	2
Air Temperature (Fahrenheit)	52 ° F
Elevation (in feet above sea level)	1,300 ft.

Wind Velocity

0 - 5 mph



Time to plane: 8.85 Seconds      Acceleration 0-30 MPH: N/A Seconds

**Notice to Consumer:** The information and data contained in this Performance Bulletin is approximate and subject to many different factors and variables. It is provided as a guideline only and should not be relied upon as representative of actual performance. Your boat's performance may be different than the information contained in this Performance Bulletin due to various factors, including your boat's actual weight, wind and water conditions, temperature, humidity, elevation, bottom paint, boat options affecting wind/water drag and/or boat weight, and operator ability. Please confirm the specifications and performance data on your specific boat/engine combination with your dealer prior to purchase. Hewescraft reserves the right to change the specifications and performance data of this Performance Bulletin or engine without notice. This document contains valuable trademarks belonging to Hewescraft and other companies. Any references to other companies or their products are for identification purposes only, and are not intended to be an endorsement.



# Performance Bulletin – 220 Ocean Pro ET HT



## Hewescraft® 220 Ocean Pro ET HT

Test Date 10/22/08

Length	24'3"
Beam	102"
Dry Weight (Boat only)	2,600 lbs
Maximum HP	225
Fuel Capacity	85
Weight as tested (Approximate)	3,875 lbs

Note: Test weight includes 3/5 tank of fuel, 1 battery, safety & test Equipment

## Yamaha F150TXR

Horsepower	150 HP
Displacement	163 cu. in.
Dry Weight (engine)	475 lbs
Gear Ratio	2.00
Mounting Height	#2

## Propellers

Material /Blades	Aluminum / 3
Series	Aluminum Series
Diameter/Pitch	14 ¼ x 17
Yamaha Part #	68F-45972-00-00

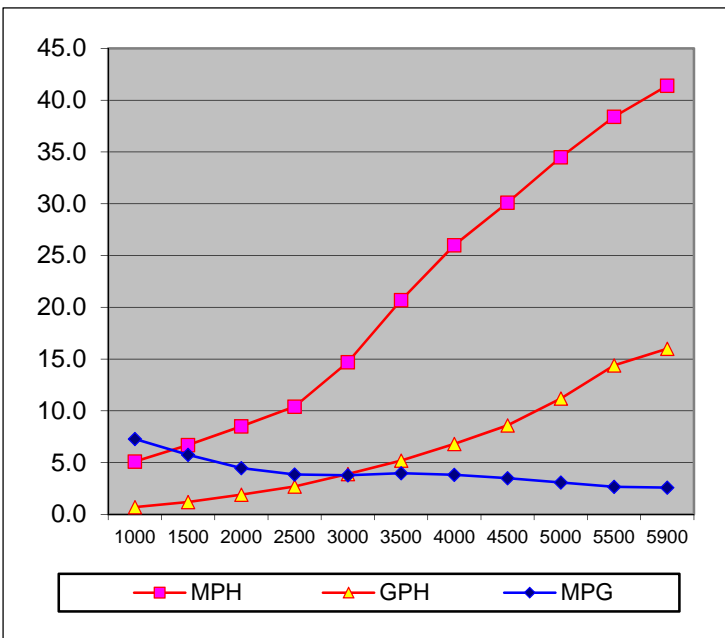
RPM	MPH	GPH	MPG
1000	5.1	0.7	7.29
1500	6.9	1.2	5.75
2000	8.5	1.9	4.47
2500	10.4	2.7	3.85
3000	14.7	3.9	3.77
3500	20.7	5.2	3.98
4000	26.0	6.8	3.82
4500	30.1	8.6	3.50
5000	34.5	11.2	3.08
5500	38.4	14.4	2.67
5900	41.4	16.0	2.59

## Test Conditions

Number of People	2
Air Temperature (Fahrenheit)	50 ° F
Elevation (in feet above sea level)	1,300 ft.

Wind Velocity

5-10 mph



Time to plane: 5.74 Seconds      Acceleration 0-30 MPH: N/A Seconds

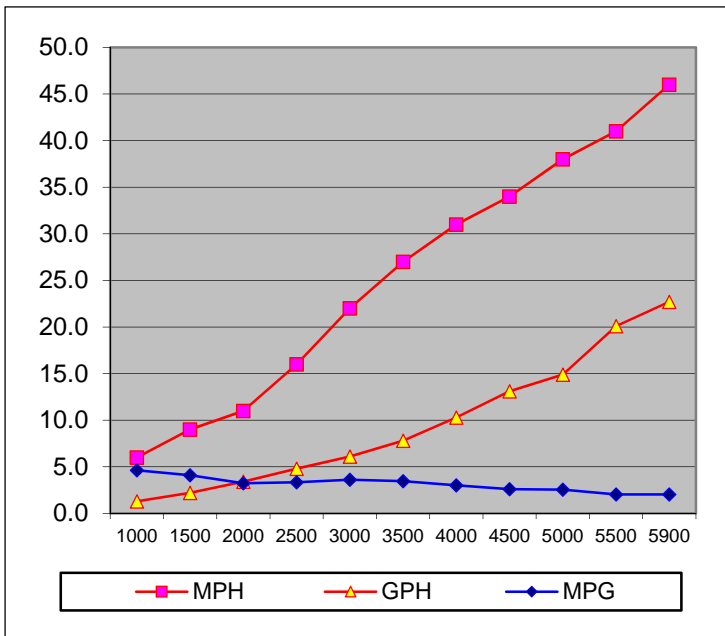
**Notice to Consumer:** The information and data contained in this Performance Bulletin is approximate and subject to many different factors and variables. It is provided as a guideline only and should not be relied upon as representative of actual performance. Your boat's performance may be different than the information contained in this Performance Bulletin due to various factors, including your boat's actual weight, wind and water conditions, temperature, humidity, elevation, bottom paint, boat options affecting wind/water drag and/or boat weight, and operator ability. Please confirm the specifications and performance data on your specific boat/engine combination with your dealer prior to purchase. Hewescraft reserves the right to change the specifications and performance data of this Performance Bulletin or engine without notice. This document contains valuable trademarks belonging to Hewescraft and other companies. Any references to other companies or their products are for identification purposes only, and are not intended to be an endorsement.



# Performance Bulletin – 240 Ocean Pro ET



RPM	MPH	GPH	MPG
1000	6.0	1.3	4.62
1500	9.0	2.2	4.09
2000	11.0	3.4	3.24
2500	16.0	4.8	3.33
3000	22.0	6.1	3.61
3500	27.0	7.8	3.46
4000	31.0	10.3	3.01
4500	34.0	13.1	2.60
5000	38.0	14.9	2.55
5500	41.0	20.1	2.04
5900	46.0	22.7	2.03



Time to plane: 3.55 Seconds      Acceleration 0-30 MPH: 5.79 Seconds

## Hewescraft® 240 Ocean Pro ET

Test Date 9/17/16

Length	26'8"
Beam	102"
Dry Weight (Boat only)	3,100 lbs
Maximum HP	300
Fuel Capacity	100
Weight as tested (Approximate)	4,951 lbs

Note: Test weight includes full tank of fuel, 1 battery, Yamaha T9.9 auxiliary outboard, safety & test Equipment

## VF250XA MAX SHO

Horsepower	250 HP
Induction	EFI
Displacement	4.2 L
Dry Weight (engine)	555 lbs.
Gear Ratio	1.75:1
Mounting Height	#2 even w/ bottom of boat

## Propellers

Material /Blades	Polished Stainless Steel / 3
Series	Saltwater Series II
Diameter/Pitch	15 3/4 x 15
Yamaha Part #	6CE-45976-00-00

## Test Conditions

Number of People	2
Air / Water Temperature (Fahrenheit)	90 / 60 ° F
Elevation (in feet above sea level)	1,270 ft.
Wind Velocity	0-5 mph



**Notice to Consumer:** The information and data contained in this Performance Bulletin is approximate and subject to many different factors and variables. It is provided as a guideline only and should not be relied upon as representative of actual performance. Your boat's performance may be different than the information contained in this Performance Bulletin due to various factors, including your boat's actual weight, wind and water conditions, temperature, humidity, elevation, bottom paint, boat options affecting wind/water drag and/or boat weight, and operator ability. Please confirm the specifications and performance data on your specific boat/engine combination with your dealer prior to purchase. Hewescraft reserves the right to change the specifications and performance data of this Performance Bulletin or engine without notice. This document contains valuable trademarks belonging to Hewescraft and other companies. Any references to other companies or their products are for identification purposes only, and are not intended to be an endorsement.